

HIGH SPEED LTE
NETWORKING
PLATFORM



DIGI TRANSPORT® LR54

High speed LTE Advanced and Wi-Fi router in a durable hardware package for demanding M2M applications

Digi TransPort LR54 is a high speed LTE Advanced networking platform designed for self-service, retail and managed networking applications across distributed enterprises. Each device features an LTE Advanced CAT6 modem with speeds up to 300 Mbps and support for global deployments with a single hardware version, as well as a 4-port Gigabit Ethernet switch and serial port for console access. The routers include license-free enterprise software features like VPN, firewall and SNMP.

The Wi-Fi variant features dual-band, dual-concurrent 5 GHz and 2.4 GHz radios, personal/enterprise security, and multiple SSIDs for maximum range and throughput performance in M2M applications.

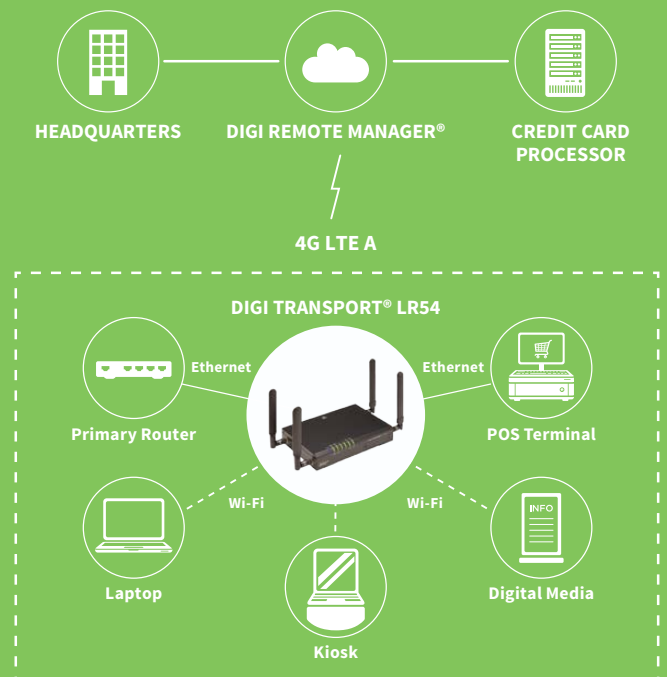
Digi TransPort LR54 is ideal for connecting:

- Retail branch sites
- Digital media installations
- Temporary “pop-up” stores
- Security monitoring equipment
- Self-service kiosks
- Guest and employee Wi-Fi users

FEATURES AND BENEFITS

- High speed LTE Advanced for digital content and business networking applications
- Powerful dual Wi-Fi radios provide 802.11 b/g/n/ac connection to local users and end devices
- Automated fail-over/fail-back between Ethernet, Cellular (dual SIMs), and IPsec tunnels
- Extended operating temp (-20° C to +70° C) ensures the Digi TransPort LR54 works reliably in cabinets and kiosks
- Digi Remote Manager® provides mass configuration, device management and troubleshooting tools
- 3-year warranty included

APPLICATION EXAMPLE



RELATED PRODUCTS



SPECIFICATIONS

Digi TransPort® LR54

WIRELESS INTERFACES

WWAN*

LTE/HSPA+	LTE-A Category 6 with HSPA+ fallback LTE Bands: 1, 2, 3, 4, 5, 7, 8, 12, 13, 20, 25, 26, 29, 30, 41 HSPA+ Bands: 1, 2, 3, 4, 5, 8
CONNECTOR	2 x 50 Ω SMA (Center pin: female)
SIM SLOTS	2, Mini-SIM (2FF)
SIM SECURITY	SIM slot cover plate included

WI-FI

802.11	Wi-Fi maximum data rates: 54 Mbps (802.11a); 11 Mbps (802.11b); 54 Mbps (802.11g); 300 Mbps (802.11n); 866 Mbps (802.11ac)
TX POWER	2.4 GHz 19 dBm (802.11g/n), 19 dBm (802.11b) 5 GHz 22.9 dBm for all modes
RX SENSITIVITY	-87 dBm / 11 Mbps (802.11b) -71 dBm / 54 Mbps and -90 dBm / 6 Mbps (802.11a) -74 dBm / 54 Mbps and -92 dBm / 6 Mbps (802.11g) -66 dBm / 300 Mbps and -92 dBm / 6 Mbps (802.11n 2.4 GHz) -67 dBm / 300 Mbps and -89 dBm / 6 Mbps (802.11n 5 GHz) -57 dBm / 866 Mbps and -83 dBm / 29 Mbps (802.11ac)
MODES	Access point, support for multiple SSID
SECURITY	Mixed WPA/WPA2 Personal; WPA2 Personal; Mixed WPA/WPA2 Enterprise; WPA2 Enterprise
CONNECTORS	2 x 50 Ω RP-SMA (Center pin: male)

WIRED INTERFACES

SERIAL

PORTS	(1) RS232 console port with TxD, RTS, and CTS. DB-9 female.
ASYNC/SYNC	Async
DTE/DCE	DCE
FLOW CONTROL	Software (XON/XOFF), Hardware supported

ETHERNET

PORTS	4
STANDARD/PHYSICAL LAYER	IEEE 802.3; 10/100/1000 Base-T
DATA RATE/MODE/INTERFACE	10/100/1000 Mbit/s; Full or Half duplex; Auto MDI/MDIX
CONNECTOR	RJ-45

MANAGEMENT

REMOTE MANAGEMENT	Digi Remote Manager® (cloud based); SNMP v1/v2c/v3 (user installed/managed)
LOCAL MANAGEMENT	Web Interface (HTTPS); CLI (SSH, Serial port)
MEMORY	256 MB of Flash; 100 MB user available memory

POWER

INPUT	12 VDC
CONNECTOR	4-pin terminal block; Power Supply comes with US plug (IEC Type A) and an EU plug (IEC Type C)
CONSUMPTION	13.68W max, 11.4W average
DC POWER SUPPLY	100-240 VAC 50/60 Hz

PHYSICAL

DIMENSIONS (L X W X H)	8.15 in x 4.5 in x 1.5 in (207 mm x 138.5 mm x 38 mm)
WEIGHT	2.90 lb (1.32 kg)
STATUS LEDS	Power, WWAN Signal, WWAN Service, SIM 1, SIM2, 2.4 GHz and 5 GHz LEDs on Wi-Fi version
MATERIAL/RATING**	Industrial (Metal) / IP30
MOUNTING	Wall mount bracket sold separately

* Transfer rates are network operator dependent

**The enclosure rating is self-declared and has not been formally verified by an independent lab.

SPECIFICATIONS

Digi TransPort® LR54

ENVIRONMENTAL

OPERATING TEMPERATURE **	-20° C to +70° C
STORAGE TEMPERATURE	-40° C to +85° C
RELATIVE HUMIDITY	0% to 95% (non-condensing) @ 25° C

APPROVALS

GSM/UMTS	PTCRB
WI-FI	Wi-Fi Alliance Wi-Fi CERTIFIED™
MATERIALS	RoHS
CELLULAR CARRIERS	Verizon, AT&T; Compatible with most major carriers
SAFETY	CB Scheme, IEC 60950-1
EMISSIONS/IMMUNITY	CE, FCC Part 15 Class B

WARRANTY

PRODUCT WARRANTY	3 years
------------------	---------

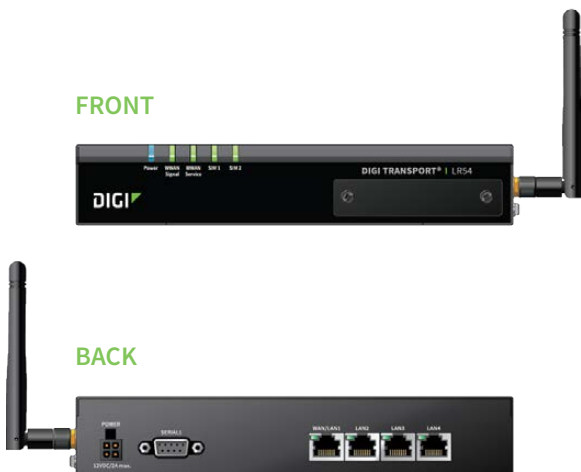
ENTERPRISE SOFTWARE

DESCRIPTION

MANAGEMENT PROTOCOLS	HTTPS, TLS1.0/1.1/1.2, SFTP, SCP,SNMP (v1/v2c/v3), SSHv2,CLI for web management; remote management via Digi Remote Manager; protocol analyzer, ability to capture PCAP for use with Wireshark
SECURITY/VPN	Stateful inspection firewall with scripting; VPN: IPsec with IKEv1; VPN Tunnels included: 32; Cryptology: SHA-1/SHA256, RSA, DH Groups 5,14,15,16,17,18 ; Encryption: AES up to 256-bit; Ethernet Port Isolation
ROUTING/FAILOVER	NAT, NAPT with IP Port Forwarding; IP Failover: Automatic failover/failback to second GSM network/Standby APN, IP Port forwarding
OTHER PROTOCOLS	DHCP

PRODUCT IMAGES

DIGI TRANSPORT LR54



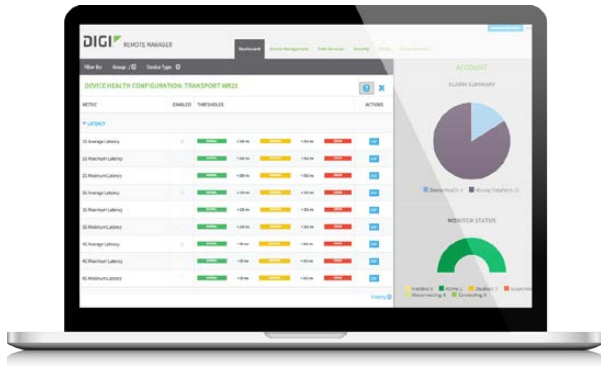
DIGI TRANSPORT LR54 W



**The enclosure rating is self-declared and has not been formally verified by an independent lab.



DIGI REMOTE MANAGER®



CAPABILITIES

- Centralized management of remote devices over 3G/4G LTE
- Define standard configurations and automatically monitor individual devices for PCI security compliance
- Report and alert on performance statistics, including connection history, signal quality, latency, data usage and packet loss
- No servers or applications to operate and maintain
- Complete tasks for your entire device network in minutes
- Edit configurations and update firmware for your individual devices or groups
- Monitor the status and location of your remote device via a web browser
- Active or deactivate cellular lines and monitor data to ensure you never incur overage charges

INFRASTRUCTURE

- Hosted in multiple commercial-grade SAS 70 certified facilities in North America
- Superior availability, operating to 99.9% or greater
- Open APIs available to support application development

SECURITY

- Certified SSAE-16 and ISO27001 facilities
- Member of the Cloud Security Alliance
- Over 175 Security Controls in place to protect your data
- Enables compliance with security frameworks like PCI, HIPAA, NIST and more
- Earned SkyHigh's Cloud Trust Program highest ranking of Enterprise-Ready

PART NUMBERS	DESCRIPTION
LR54-AA401	Digi TransPort LR54, LTE-A, Power Supply, Ethernet Cable, and Antenna Included
LR54-AW401	Digi TransPort LR54, LTE-A, Wi-Fi, Power Supply, Ethernet Cable, and Antenna Included
78000001	Digi TransPort LR54 Wall Bracket Kit