

InnoRobust II 1.8" SATA SSD



Features

- Compliant with MIL-STD-810-F/G
- Data Security
(QEraser/ SEraser/ Destroy/ Write Protect)
- Excellent data transfer rate
- Conformal coating (Optional)

R:170MB/s
W:140MB/s

SATA II
3Gb/s

ECC &
Wear leveling

Thermal
sensor

S.M.A.R.T

MIL-STD-
810F/G

Conformal
Coating

Data
Security

Specifications

Connector Type	Standard 7+9 pin Micro SATA
Flash Type	SLC (Single Level Cell) MLC (Multi Level Cell)
Density	SLC: 8GB, 16GB, 32GB, 64GB, 128GB MLC: 32GB, 64GB, 128GB, 256GB
Interface	SATA II 3.0Gb
Sustained R/W Performance	SLC Read : 170 MB/sec (max.) Write : 140 MB/sec (max.) MLC Read : 200 MB/sec (max.) Write : 120 MB/sec (max.)

Environmental

DC Input	+5V DC \pm 5%	
Power consumption (Max.)	SLC Read: 350mA Write: 450mA Idle: 220mA	MLC Read: 350mA Write: 500mA Idle: 220mA
Operating Temperature	0°C~+70°C (Standard Grade) -40°C~+85°C (Industrial Grade)	
Storage Temperature	-55°C~+95°C	
Humidity	Relative Humidity: 10-95%, non-condensing	
Flash Endurance	MLC: 3000 program/erase cycles SLC: 100,000 program/erase cycles	
MTBF	> 3,000,000 hours	
Certification	CE, FCC, RoHS	
Warranty	SLC: 5 years, MLC: 2 years	

Mechanicals

Dimension (L x W x H)	78.50x54.00x5.00mm
Weight	45g \pm 5g
Vibration	20G, 7 Hz to 2K Hz, , 3 axes
Shock	1500G, Duration: 0.5ms, 3 axes

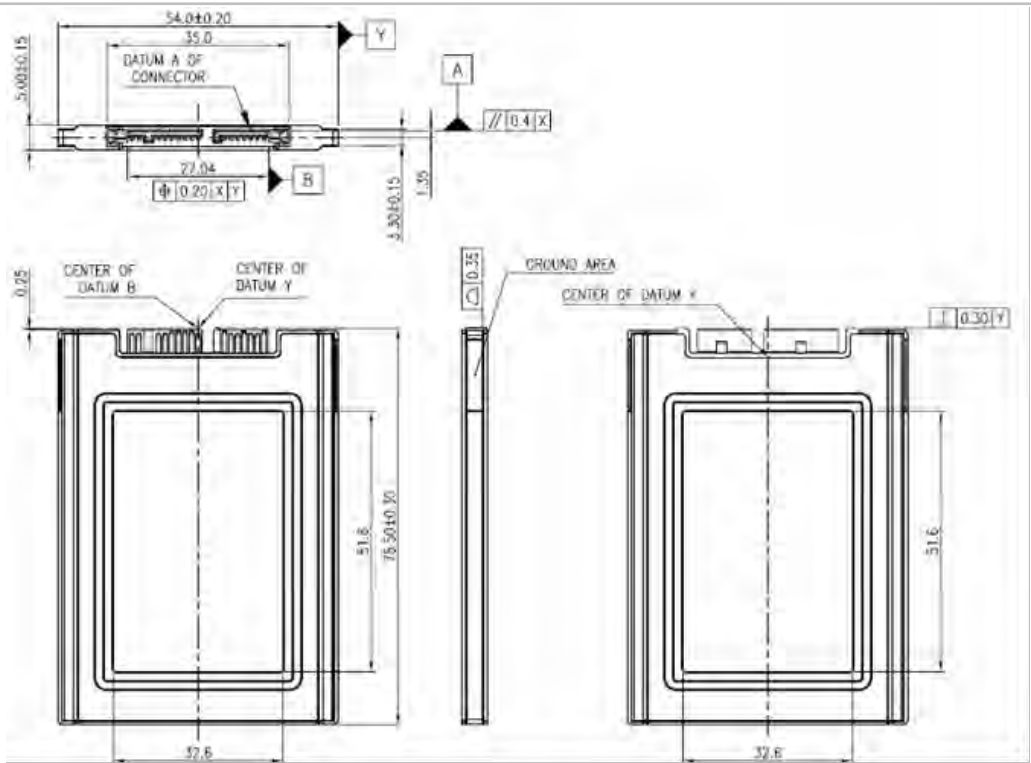
Health Monitoring Tool

S.M.A.R.T.	Supported
i-S.M.A.R.T.	Supported (Utility for Windows, Linux)

Ordering Information

SLC		
Capacity	Standard Grade	Industrial Grade
8GB	D1SN-08GJ21A C 2EB	D1SN-08GJ21A W 2EB
16GB	D1SN-16GJ21A C 2EB	D1SN-16GJ21A W 2EB
32GB	D1SN-32GJ21A C 2EB	D1SN-32GJ21A W 2EB
64GB	D1SN-64GJ21A C 2EB	D1SN-64GJ21A W 2EB
128GB	D1SN-A28J21A C 2EB	D1SN-A28J21A W 2EB
MLC		
Capacity	Standard Grade	Industrial Grade
32GB	D1SN-32GJ21A C 1EN	D1SN-32GJ21A W 1EN
64GB	D1SN-64GJ21A C 1EN	D1SN-64GJ21A W 1EN
128GB	D1SN-A28J21A C 1EN	D1SN-A28J21A W 1EN
256GB	D1SN-B56J21A C 1EN	D1SN-B56J21A W 1EN

Mechanical Dimension



Signal and power segment

