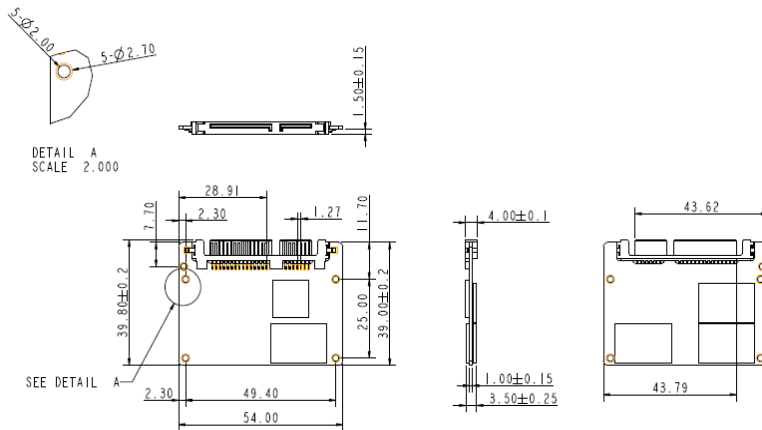


SATA Slim

3SE-P series

Drawing



Specifications

Interface	SATA III
Flash Type	SLC
Capacity	8GB~128GB
Max. Channels	4
Sequential R/W (MB/sec, max.)	480 / 330
Max. Power Consumption	1.35W (5V x 270 mA)
Thermal Sensor	ST- optional/ WT- default
External DRAM Buffer	✓
H/W Write Protect	-
Pin7 Power	-
ATA Security	✓
S.M.A.R.T.	✓
Dimension (WxLxH)	54.0 X 39.0 X 4.0 mm
Environment	Vibration: 20G @7~2000Hz Shock: 1500G @ 0.5ms Storage Temperature: -55°C ~ +95°C MTBF: 3 million hours

Ordering Information

Operation Temp.	8GB	16GB	32GB	64GB	128GB
Standard Grade (0°C ~ +70°C)	DESLM-08GD67SCAOB	DESLM-16GD67SCAOB	DESLM-32GD67SCAOB	DESLM-64GD67SCAOB	DESLM-A28D67SCAOB
Industrial Grade (-40°C ~ +85°C)	DESLM-08GD67SWAOB	DESLM-16GD67SWAOB	DGSLM-32GD67SWAOB	DESLM-64GD67SWAOB	DESLM-A28D67SWAOB