

ENTERPRISE CLASS  
WI-FI TO CELLULAR  
ROUTER



# DIGI TRANSPORT® WR44

Enterprise class, commercial grade Wi-Fi to cellular router with flexible interface options ideal for distributed branch applications

The Digi TransPort WR44 cellular router is an all-in-one branch networking solution with true enterprise-class routing, security and firewall. This multifunction cellular router features a flexible design with integrated Wi-Fi access point, USB, serial, 4-port Ethernet switch, with an optional serial expansion card.

The Digi TransPort family offers an advanced routing, security and firewall feature set including stateful inspection firewall and integrated VPN. Enterprise-class protocols incorporate BGP, OSPF and VRRP+, a patented technology built upon the popular VRRP failover standard providing true auto sensing, auto failure and auto recovery of any line drop.

Digi TransPort WR44 is ideal for retail and utility applications. Flexible power options include 9–36 VDC barrel or Molex connectors for direct integration into DC power supplies. Digi Remote Manager® provides easy setup, configuration and maintenance of large installations of Digi TransPort devices.

## BENEFITS

- Enterprise class cellular routers with advanced dynamic routing, security and firewall features
- High speed cellular interfaces: HSPA+ and 4G LTE
- Optional integrated 802.11 b/g/n; a/n Wi-Fi access point and 4-port Ethernet switch
- Flexible interfaces including serial with DC power options
- Powerful integrated end user programming
- Digi Remote Manager software for easy setup, configuration, and maintenance

## RELATED PRODUCTS



Digi TransPort®  
WR11



Digi TransPort®  
WR21



Digi TransPort®  
WR44 R



Accessories



Digi Remote  
Manager®

## APPLICATION EXAMPLE



HEADQUARTERS



DIGI REMOTE MANAGER®



CREDIT CARD  
PROCESSOR



Cellular/VPN

### DIGI TRANSPORT® WR44



Wi-Fi

Laptop



Serial

Cash Register

## SPECIFICATIONS

## Digi TransPort® WR44

## WIRELESS INTERFACES

## WWAN\*\*

LTE - EMEA (L1)	800/850/900/1800/1900/2100/2600 MHz; 3G fall back to 850/900/1900/2100MHz and 2G fall back to 850/900/1800/1900 MHz; Transfer rate (max): 50 Mbps Up, 100 Mbps Down
LTE 450 - EMEA/APAC (M2)	Cellient MPL200, LTE: 450/800/900/1800/2600MHz; fallback to HSPA and 2G
LTE - NORTH AMERICA (L5)	Software defined multi-carrier (Verizon, AT&T, and Sprint) 700/850/1700(AWS)/1900 MHz; 2G/3G GSM fall back to 850/900/1700AWS/1800/1900/2100 MHz; 2G/3G CDMA fall back to 800/1900 MHz; Transfer rate (max): 50 Mbps up, 100 Mbps down, Verizon Private Network, DMNR and PNTM Approved
HSPA+ (U9)	850/900/1700 (AWS)/1900/2100 MHz; Transfer rate (max): 5.76 Mbps Up, 21 Mbps Down
CONNECTOR	Ux, Lx variants: 2 x 50 Ω SMA (Center pin: female); Dx, variants: 1 x 50 Ω SMA (Center pin: female)
SIM SLOTS	2, Mini-SIM (2FF)
SIM SECURITY	SIM slot cover plate optional

## WI-FI\*

STANDARD	802.11 b/g/n; a/n
MODES	Access point, Client and support for multiple SSID
TRANSMIT POWER	20 dBm + 1.0/-1.5 dBm
RECEIVE SENSITIVITY	54 Mbps / <-72 dBm and 11 Mbps / -90 dBm
SECURITY	Open or shared key authentication; WEP (64- and 128-bit) encryption; WPA/WPA2 with RADIUS (WPA Enterprise and pre-shared keys)
CONNECTORS	2 x 50 Ω RP-SMA (Center pin: male)

## WIRED INTERFACES

## SERIAL

PORTS	1; Expansion cards available to increase serial ports
STANDARD	RS-232; Expansion cards available in RS-422/485
ASYNC/SYNC	Async
DTE/DCE	DCE
SIGNAL SUPPORT	TXD, RXD, RTS, CTS, DTR, DCD, DSR, RI
FLOW CONTROL	Software (XON/XOFF), Hardware supported
COM PORT REDIRECTOR	RealPort®
CONNECTOR	DB-9 female

## ETHERNET

PORTS	4
STANDARD/PHYSICAL LAYER	IEEE 802.3; 10/100 Base-T
DATA RATE/MODE/INTERFACE	10/100 Mbit/s; Full or Half duplex; Auto MDI/MDIX
CONNECTOR	RJ-45

## USB

PORTS	1
STANDARD	USB 2.0
SIGNALING	Full- or low-speed
CONNECTOR	Type A

## SOFTWARE

REMOTE MANAGEMENT	Digi Remote Manager® (cloud based); SNMP v1/v2c/v3 (user installed/managed)
LOCAL MANAGEMENT	Web Interface (HTTP/HTTPS); CLI (Telnet, SSH, SMS, Serial port)
MANAGEMENT/TROUBLESHOOTING TOOLS	FTP, SFTP, SCP, Protocol Analyzer with PCAP for Wireshark, Event Logging with Syslog and SMTP, NTP/SNTP
PROGRAMMING TOOLS/ENVIRONMENTS	Python, DIA, Digi ESP™
MEMORY	128 MB NAND Flash/64 MB DDR2 SDRAM

\* Optional hardware. Lead time and/or minimum order quantity may apply. Contact Digi Sales for details.

\*\* Transfer rates are network operator dependent

## SPECIFICATIONS

# Digi TransPort® WR44

### POWER

<b>INPUT</b>	9 – 36 VDC
<b>CONSUMPTION</b>	15W max, 8.5W typical
<b>CONNECTOR</b>	Locking barrel and 4-pin terminal block (2 pins are used for power; the other 2 pins are used for I/O).
<b>DC POWER CORD*</b>	Locking barrel to bare wire or 4-pin connector to bare wire
<b>DC POWER SUPPLY*</b>	100-240 VAC 50/60 Hz; Option of standard temperature or extended temperature

### PHYSICAL

<b>DIMENSIONS (L X W X H)</b>	5.7 in x 8.3 in x 1.6 in (145 mm x 210 mm x 40 mm)
<b>WEIGHT</b>	1.98 lb (0.9 kg)
<b>STATUS LEDS</b>	Power, LAN, Wi-Fi, Serial, WWAN (Link, Act, SIM), Signal strength
<b>MATERIAL/RATING****</b>	Industrial (Metal)/ IP30
<b>MOUNTING</b>	Brackets for wall mount & DIN rail sold separately

### ENVIRONMENTAL

<b>OPERATING TEMPERATURE ***</b>	0° C to +40° C
<b>STORAGE TEMPERATURE</b>	-40° C to +85° C
<b>RELATIVE HUMIDITY</b>	0% to 95% (non-condensing) @ 25° C
<b>ETHERNET ISOLATION</b>	1.5 kV RMS
<b>SERIAL PORT PROTECTION (ESD)</b>	15 kV
<b>HAZARDOUS (CLASS 1 DIV 2)</b>	N/A
<b>CONFORMAL COATING</b>	N/A

### APPROVALS

<b>GSM/HSPA/LTE</b>	PTCRB, NAPRD.03, GCF-CC, R&TTE, EN 301 511
<b>CELLULAR CARRIERS</b>	Certified by most major carriers.
<b>SAFETY</b>	UL 60950, CSA 22.2 No. 60950, EN60950
<b>EMISSIONS/IMMUNITY</b>	CE, FCC Part 15 Class B, AS/NZS CISPR 22, EN55024, EN55022 Class B

### WARRANTY

<b>PRODUCT WARRANTY</b>	5 years
-------------------------	---------

## ENTERPRISE SOFTWARE

## DESCRIPTION

<b>PROTOCOLS</b>	HTTP, HTTPS, FTP, SFTP, SSL, SMTP, SNMP (v1/v2c/v3), SSH, Telnet and CLI for web management; remote management via Digi Remote Manager; SMS management, protocol analyzer, ability to capture PCAP for use with Wireshark; DynDNS; Dynamic DNS client compatible with BIND9/No-IP/DynDNS
<b>SECURITY/VPN</b>	Stateful inspection firewall with scripting, address and port translation; VPN: IPSec with IKEv1, IKEv2, NAT Traversal; SSL, SSLv2, FIPS 197, Open VPN client and server; PPTP, L2TP; VPN Tunnels included: 5; Maximum VPN Tunnels available: 200; Cryptology: SHA-1, MD5, RSA; Encryption: DES, 3DES and AES up to 256-bit; Authentication: RADIUS, TACACS+, SCEP for X.509 certificates; Content Filtering (via 3rd party) ; MAC Address Filtering; VLAN support; Ethernet Port Isolation
<b>ROUTING/FAILOVER</b>	IP pass-through ; NAT, NAPT with IP Port Forwarding; Ethernet Bridging; GRE; Multicast Routing; Routing Protocols: PPP, PPPoE, RIP (v1, v2) OSPF, SRI, BGP, iGMP routing (multicast); RSTP (Rapid Spanning Tree Protocol); IP Failover: VRRP, VRRP+TM; Automatic failover/fail-back to second GSM network/Standby APN
<b>OTHER PROTOCOLS</b>	DHCP; Dynamic DNS client compatible with BIND9/No-IP/DynDNS; QoS via TOS/DSCP/WRED
<b>SPECIALTY/LEGACY PROTOCOLS</b>	RealPort®; Modbus UDP/TCP to serial; X.25 including XOT, SNA/IP, TPAD and PAD; Protocol switch*; Ethernet, serial I/O and DNP3 and Modbus bridging for connecting diverse field assets

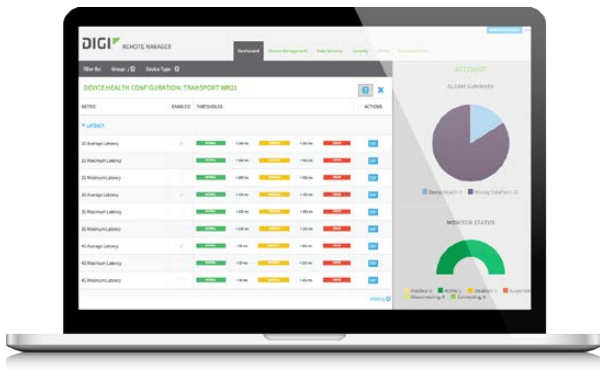
\* Optional hardware. Lead time and/or minimum order quantity may apply. Contact Digi Sales for details.

\*\* Transfer rates are network operator dependent

\*\*\* Reduced cellular performance may occur outside of -20° C to +60° C. Standard temperature power supplies may reduce temperature range.

\*\*\*\* The enclosure rating is self-declared and has not been formally verified by an independent lab.

# DIGI REMOTE MANAGER®



## CAPABILITIES

- Centralized management of remote devices over 3G/4G LTE
- Define standard configurations and automatically monitor individual devices for PCI security compliance
- Report and alert on performance statistics, including connection history, signal quality, latency, data usage and packet loss
- No servers or applications to operate and maintain
- Complete tasks for your entire device network in minutes
- Edit configurations and update firmware for your individual devices or groups
- Monitor the status and location of your remote device via a web browser
- Active or deactivate cellular lines and monitor data to ensure you never incur overage charges

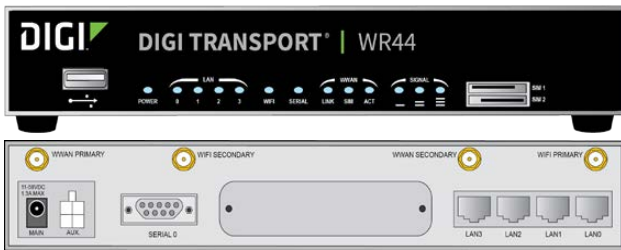
## INFRASTRUCTURE

- Hosted in multiple commercial-grade SAS 70 certified facilities in North America and Europe
- Superior availability, operating to 99.9% or greater
- Open APIs available to support application development

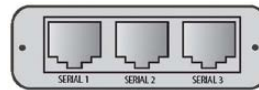
## SECURITY

- Certified SSAE-16 and ISO27001 facilities
- Member of the Cloud Security Alliance
- Over 175 Security Controls in place to protect your data
- Enables compliance with security frameworks like PCI, HIPAA, NIST and more
- Earned SkyHigh's Cloud Trust Program highest ranking of Enterprise-Ready

## PRODUCT IMAGES



## CONNECTOR



### ASYNCHRONOUS SERIAL PORTS (A3)

3x asynchronous RS-232 serial ports

PART NUMBERS	DESCRIPTION
WR44-L100-CE1-SW	Digi TransPort WR44 - Cellular (4G LTE International), No Wi-Fi, Antennas & Power Supply Included (International)
WR44-L100-NE1-SW	Digi TransPort WR44 - Cellular (4G LTE International), Wi-Fi, Antennas & Power Supply Included (International)
WR44-L500-CE1-SU	Digi TransPort WR44 - Cellular (4G LTE Multi-Carrier Software Defined, North America), No Wi-Fi, Antennas & Power Supply Included
WR44-L500-NE1-SU	Digi TransPort WR44 - Cellular (4G LTE Multi-Carrier Software Defined, North America), Wi-Fi, Antennas & Power Supply Included
WR44-L5A3-CE1-SU	Digi TransPort WR44 - Cellular (4G LTE Multi-Carrier Software Defined, North America), No Wi-Fi, Async (3 RS-232 Ports), Antennas & Power Supply Included
WR44-U900-CE1-SW	Digi TransPort WR44 - Cellular (HSPA+ Global), No Wi-Fi, Antennas & Power Supply Included (International)
WR44-U900-NE1-SW	Digi TransPort WR44 - Cellular (HSPA+ Global), Wi-Fi, Antennas & Power Supply Included (International)