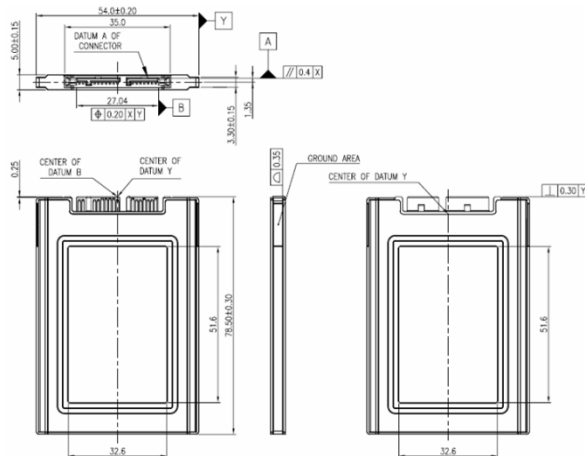


1.8" SATA SSD

3SE2-P series

Drawing



Specifications

Interface	SATA III
Flash Type	SLC
Capacity	8GB~512GB
Max. Channels	4
Sequential R/W (MB/sec, max.)*	560 / 360 MB/s
4KB Random (OD32) R/W (IOPS)	80,000/ 72,000
Max. Power Consumption	2.35 W (5V x 470mA)
Thermal Sensor	✓
External DRAM Buffer	✓
H/W Write Protect	NA
iCell	Optional
ATA Security	✓
S.M.A.R.T.	✓
DEVSLP Mode	✓ (min. power consumption 3mW)
Slumber Mode	✓ (min. power consumption 30mW)
Dimension (WxLxH)	54.0 x 78.5 x 5.0mm
Environment	Vibration: 20G @7~2000Hz Shock: 1500G @ 0.5ms Storage Temperature: -55°C ~ +95°C MTBF: 3 million hours
* Performance based on CrystalDiskMark 5.1.2 with file size 1000MB	

Ordering Information

Operation Temp.	8GB	16GB	32GB	64GB	128GB	256GB	512GB
Standard Grade (0°C ~ +70°C)	DES18-08GD82SCAQB(P) DES18-08GD82SCBOB(P)	DES18-16GD82SCAQB(P) DES18-16GD82SCBOB(P)	DES18-32GD82SCAQB(P) DES18-32GD82SCBOB(P)	DES18-64GD82SCAQB(P) DES18-64GD82SCBOB(P)	DES25-A28D82SCAQB(P) DES18-A28D82SCBOB(P)	DES25-B56D82SCAQB(P) DES18-B56D82SCBOB(P)	DES25-C12D82SCAQT(P) DES18-C12D82SCBOB(P)
Industrial Grade (-40°C ~ +85°C)	DES18-08GD82SWAQB(P) DES18-08GD82SWBOB(P)	DES18-16GD82SWAQB(P) DES18-08GD82SWBOB(P)	DES18-32GD82SWAQB(P) DES18-32GD82SWBOB(P)	DES18-64GD82SWAQB(P) DES18-64GD82SWBOB(P)	DES25-A28D82SWAQB(P) DES18-A28D82SWBOB(P)	DES25-B56D82SWAQB(P) DES18-B56D82SWBOB(P)	DES25-C12D82SWAQT(P) DES18-C12D82SWBOB(P)