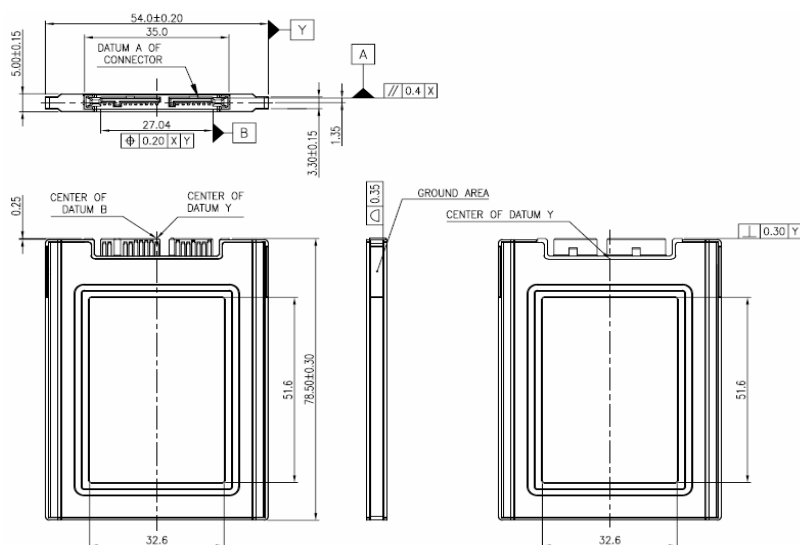


1.8" SATA SSD

3SR-P series

Drawing



Specifications

Interface	SATA III
Flash Type	SLC
Capacity	8GB~256GB
Max. Channels	4
Sequential R/W (MB/sec, max.)	490 / 340
Max. Power Consumption	3 W (5V x 600 mA)
Thermal Sensor	✓
External DRAM Buffer	✓
H/W Write Protect	✓
Pin7 Power	-
ATA Security	✓
S.M.A.R.T.	✓
Dimension (WxLxH)	54.0 X 78.5 X 5.00 mm
Environment	Vibration: 20G @7~2000Hz Shock: 1500G @ 0.5ms Storage Temperature: -55°C ~ +95°C MTBF: 3 million hours

Ordering Information

Operation Temp.	8GB	16GB	32GB	64GB	128GB	256GB
Standard Grade (0°C ~ +70°C)	DRS18-08GD67SCBQB	DRS18-16GD67SCBQB	DRS18-32GD67SCBQB	DRS18-64GD67SCBQB	DRS18-A28D67SCBQB	DRS18-B56D67SCBQB
Industrial Grade (-40°C ~ +85°C)	DRS18-08GD67SWBQB	DRS18-16GD67SWBQB	DRS18-32GD67SWBQB	DRS18-64GD67SWBQB	DRS18-A28D67SWBQB	DRS18-B56D67SWBQB