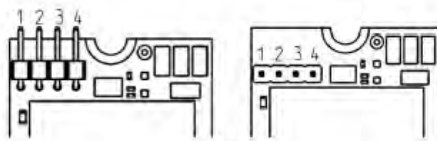
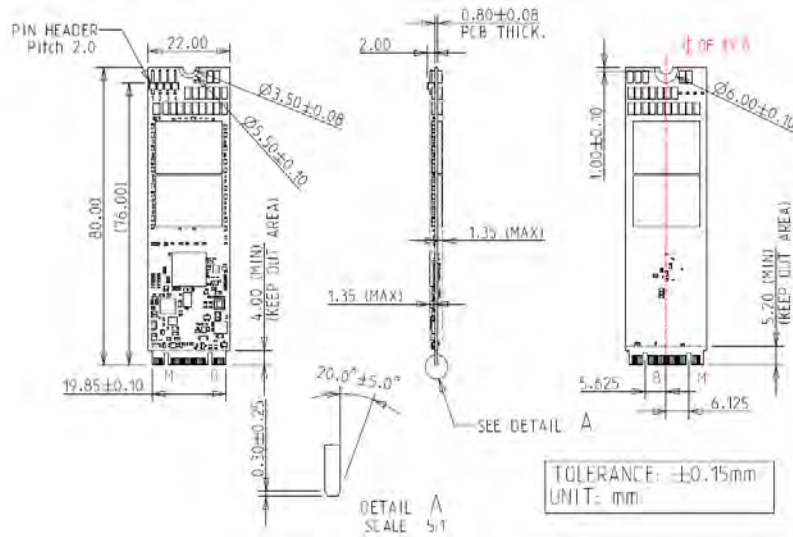
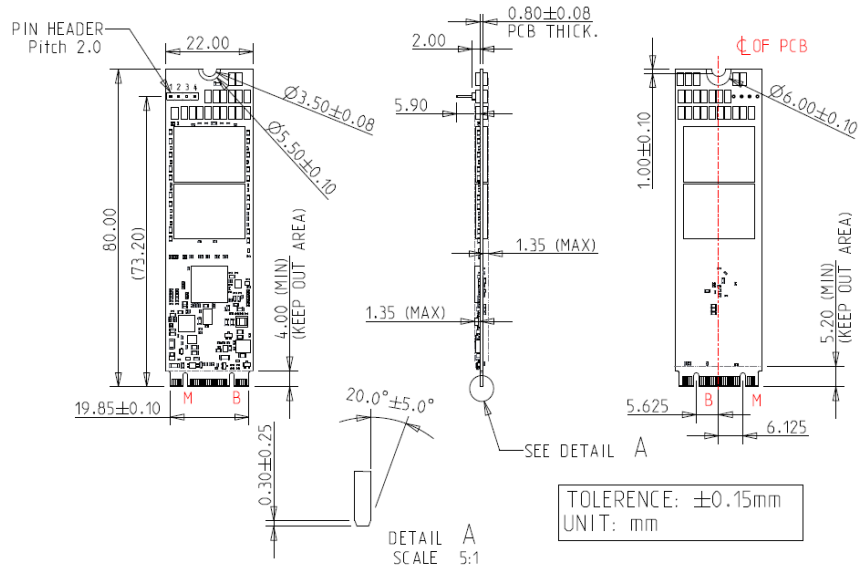
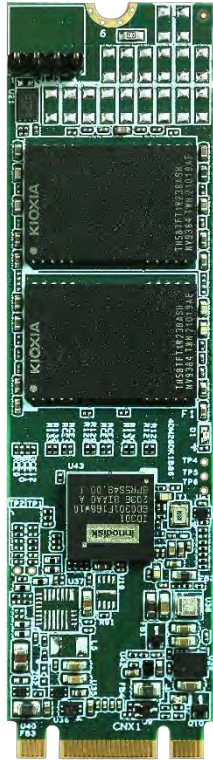
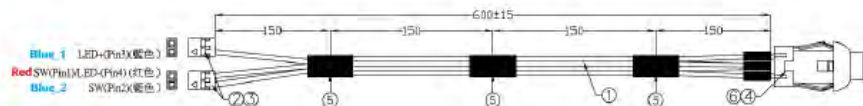


Product Dimension



Pin Header Number	Pin Define	Installation for Innodisk Demo Cable (PN: 7W3000000920)	Rating
1	Power	NA	3.3V ± 5%
2	GPIO Pin8, Output for InnoOSR LED indication	Blue cable_1	3.3V ± 5%
3	GND	Red	NA
4	GPIO Pin13, Input for InnoOSR Recovery Trigger, Low active	Blue cable_2	3.3V ± 5%



Specification

Interface	SATA III
Flash Type	3D TLC
Capacity	64GB~1TB
Flash Endurance	3,000 P/E cycles
Max. Channels	4
Sequential R/W (MB/sec, max.)*	560 / 340 MB/s
4KB Random (QD32) R/W (IOPS)**	81,000/74,000
Max. Power Consumption	2.1W
Thermal Sensor	√
ATA Security	√
S.M.A.R.T.	√
Dimension (WxLxH)	22.0 X 80.0 X 3.5 mm
Environment	Vibration: 20G @7~2000Hz Shock: 1500G @ 0.5ms Storage Temperature: -55°C to +95°C MTBF: 3 million hours
* Performance based on CrystalDiskMark 6.0.2 with file size 1000MB	

Product Specification

Main feature of InnoOSR family is its OS back up and swift recovery mechanism, which allow field repair easier than ever for malfunction systems with software level damages. As shown in above picture, 1 x 4 pin headers located on the rear end of PCBA can be used to interact with firmware of InnoOSR to trigger OS recovery process and provide LED signal which indicates the recovery status.

Ordering Information

Capacity	Standard Temperature (0°C~70°C)	Industrial Temperature (-40°C~85°C)
64GB	DUM28-64GDK1EC%DFXXG	DUM28-64GDK1EW%DFXXG
128GB	DUM28-A28DK1EC%QFXXG	DUM28-A28DK1EW%QFXXG
256GB	DUM28-B56DK1EC%QFXXG	DUM28-B56DK1EW%QFXXG
512GB	DUM28-C12DK1EC%QFXXG	DUM28-C12DK1EW%QFXXG
1TB	DUM28-01TDK1EC%QFXXG	DUM28-01TDK1EW%QFXXG
Note	1. %: 1/A represent horizontal placement of pin headers; 2/B represent vertical placement of pin headers 2. XXG: 10G-30G 3. Push-button cable with green LED is with PN of 7W3000000870 and not included in above standard InnoOSR product PN but can be order separately for trial purpose	