

# IES-150B

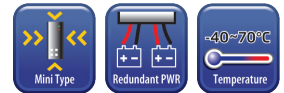


IES-150B

## ► Industrial 5-port mini type unmanaged Ethernet switch with 5x10/100Base-T(X)

### Features

- Supports 5 ports 10/100 Base-T(X)
- Supports auto-negotiation and auto-MDI/MDI-X
- Supports store-and-forward transmission
- Supports flow control
- Compact size for easily installation
- Rigid IP-30 housing design
- DIN-Rail and wall mounting enabled

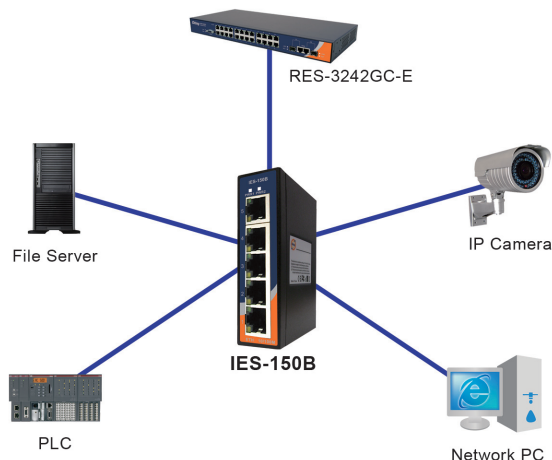


### Introduction

IES-150B is an unmanaged Ethernet switch with 5x10/100Base-T(X) ports. With very mini size of housing, you can install IES-150B easily. In addition, IES-150B is with rigid IP-30 housing design and can operate under harsh environment. The extended operating temperature range from -40 to 70°C is ready and can satisfy most requirement of operation.

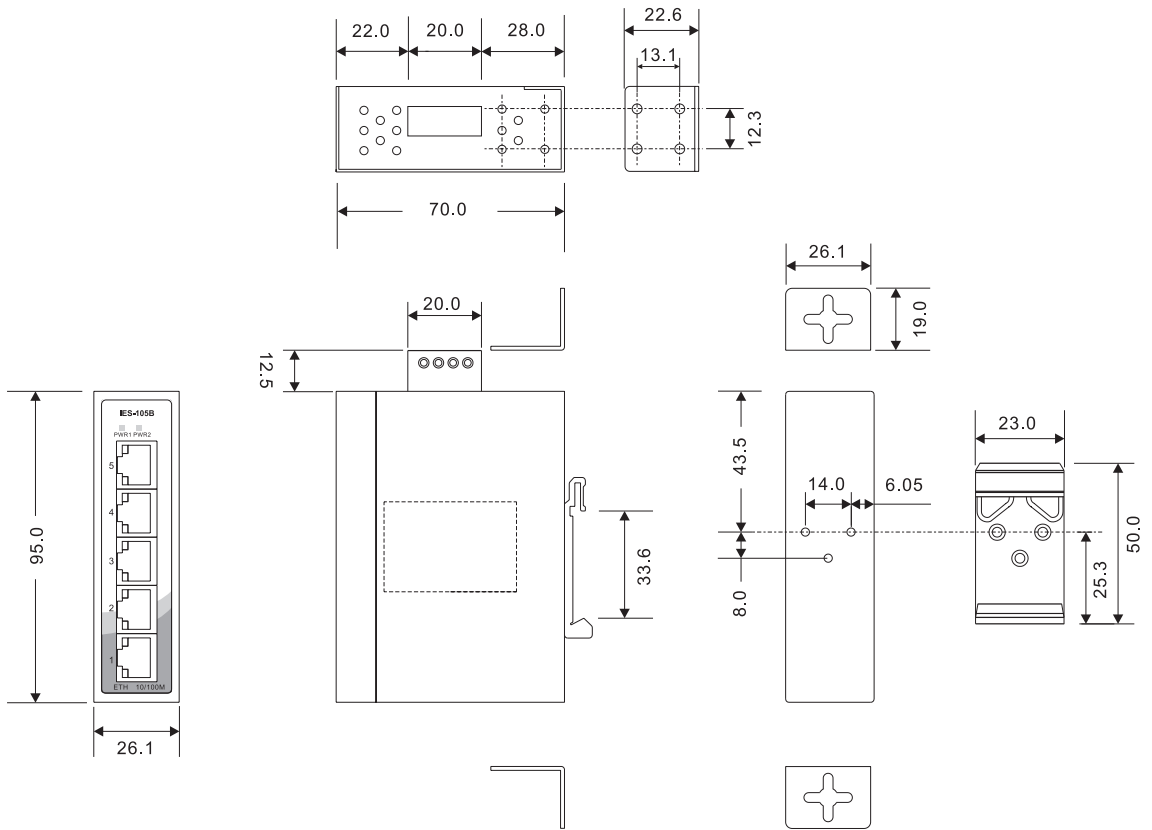
### Practical Operation

IES-150B can be used in connecting several Ethernet devices like Ethernet I/O, IP-Camera or other Ethernet switches. In addition, its mini size enables easily installation and minimize space requirement.



Connections of Ethernet devices

## Dimensions



(Unit=mm)

## Specifications

ORing Switch Model	IES-150B
<b>Physical Ports</b>	
10/100Base-T(X) Ports in RJ45 Auto MDI/MDIX	5
<b>Technology</b>	
Ethernet Standards	IEEE 802.3 for 10Base-T IEEE 802.3u for 100Base-TX IEEE 802.3x for Flow control
MAC Table	2048 MAC addresses
Processing	Store-and-Forward
<b>LED Indicators</b>	
Power indicator	Green : Power LED x 2
10/100Base-T(X) RJ45 port Indicator	Green for port Link/Act. Amber for Duplex/Collision
<b>Power</b>	
Input Power	Dual 12~48 VDC power input on 4-pin terminal block
Power Consumption (Typ.)	3 Watts
Overload Current Protection	Present

Reverse Polarity Protection	Present
<b>Physical Characteristics</b>	
Enclosure	IP-30
Dimensions (W x D x H)	26.1 (W) x 70 (D) x 95 (H)mm (1.03 x 2.76 x 3.74 inch)
Weight (g)	205 g
<b>Environmental</b>	
Storage Temperature	-40 to 85°C (-40 to 185°F)
Operating Temperature	-40 to 70°C (-40 to 158°F)
Operating Humidity	5% to 95% Non-condensing
<b>Regulatory Approvals</b>	
EMI	FCC Part 15, CISPR (EN55022) class A
EMS	EN61000-4-2 (ESD), EN61000-4-3 (RS), EN61000-4-4 (EFT), EN61000-4-5 (Surge), EN61000-4-6 (CS), EN61000-4-8, EN61000-4-11
Shock	IEC60068-2-27
Free Fall	IEC60068-2-32
Vibration	IEC60068-2-6
Safety	EN60950-1
Warranty	5 years

## Ordering Information

IES-1 **A** **B**



Code definition	10/100Base-T(X) Port Number	Additional Port Number
<b>Option</b>	- <b>5</b> : 5 ports	- <b>0</b> : 0 port

Available Model	Model Name	Descriptn
	IES-150B	Industrial 5-port mini type unmanaged Ethernet switch with 5x10/100Base-T(X)

### Packing List

- IES-150B
- DIN-Rail Kit
- Wall-mount Kit
- Quick Installation Guide

### Optional Accessories (Can be purchased separately)

- DR-45 series, 45W DIN-Rail power supply
- DR-75 series, 75W DIN-Rail power supply
- DR-120 series, 120W DIN-Rail power supply
- PAA-121000, 12VDC/1000mA 12W Power Adapter with universal 100 to 240VAC input, US plug
- PAE-121000, 12VDC/1000mA 12W Power Adapter with universal 100 to 240VAC input, EU plug
- SDR-240-48, 240W DIN-Rail power supply
- SDR-480-48, 480W DIN-Rail power supply