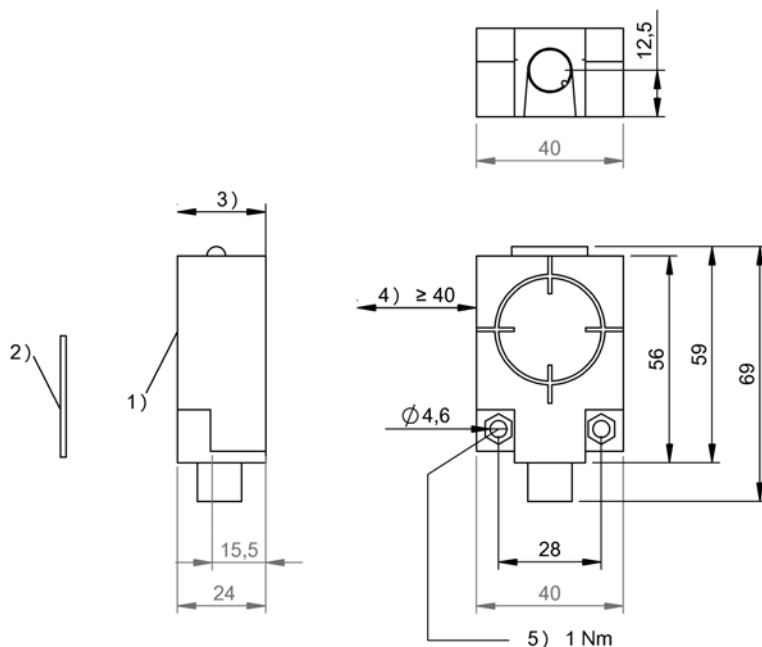


HF (13.56 MHz)
 BIS M-410-067-001-04-S92
 Order Code: BIS00W1

BALLUFF



- 1) Sensing surface
- 2) Data carrier
- 3) Clear zone
- 4) Clear zone surrounding
- 5) Tightening torque



Basic features

Antenna type	round
Approval/Conformity	CE cULus EAC WEEE
EN 55011	Size 1, Cl. A
Principle of operation	Read/write device

Display/Operation

Function indicator	COM field, LED yellow RF field, LED red Power (ON), LED green
--------------------	---

Electrical connection

Connection (RS485): M12x1-Male, 5-pin

Electrical data

Current consumption max. at 24 V DC	150 mA
EN 300330-1	Power Class 5
Operating voltage U_b	10...30 VDC
Residual ripple max.	included

HF (13.56 MHz)
BIS M-410-067-001-04-S92
Order Code: BIS00W1

BALLUFF

Environmental conditions

Ambient temperature	-20...50 °C
Continuous shock load	yes
EN 60068-2-27, Shock	yes
EN 60068-2-32 Free fall	yes
EN 60068-2-6, Vibration	yes
IP rating	IP67
Storage temperature	-20...70 °C

Functional Characteristics

Supported data carrier types	DIN ISO 14443 DIN ISO 15693
------------------------------	--------------------------------------

Material

Housing material	PC, With PU potting
------------------	---------------------

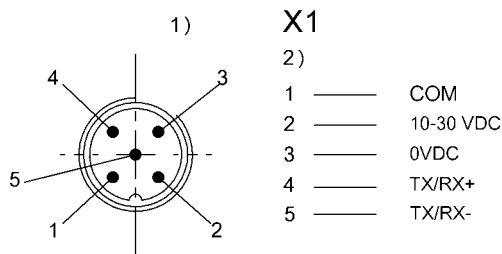
Mechanical data

Application weight	66.00 g
Dimension	40 x 24 x 56 mm
Installation	metal-free (clear zone)

Output/Interface

Interface	Subnet 16 (RS485)
-----------	-------------------

Connector Drawings



- 1) View towards connector
2) Male 5-pin/ Function

Help Views

HF (13.56 MHz)

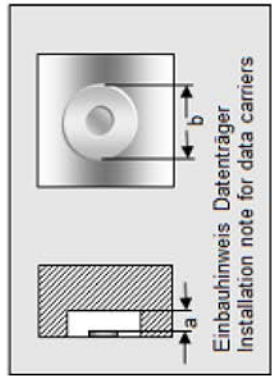
BIS M-410-067-001-04-S92

Order Code: BIS00W1

BALLUFF

BIS M-410-__

	BIS M-130-03/L	BIS M-130-07/L	BIS M-131-10/L	BIS M-132-03/L	BIS M-132-03/L-HT
passende Datenträger					
Appropriate data carriers					
Abstand Datenträger zu Metall in mm (a)				>25	>25
Data carrier distance to metal in mm					
Freizone Datenträger in mm (b)				>100	>100
Data carrier clear zone in mm					
Schreibabstand in mm	0-17	0-12	0-5	0-48	0-40
Write distance in mm					
Lesebestand in mm	0-17	0-12	0-5	0-48	0-40
Read distance in mm					
Versatz in mm	0 ±15	±12	±10	±30	±25
bei Abstand von	2 ±15	±12	±10	±30	±25
	4 ±15	±12	±7,5	±30	±25
	5 ±15	±12	±5	±30	±25
	10 ±14	±10		±30	±25
	12 ±12	±5		±25	±20
	15 ±12			±25	±20
	17 ±7			±25	±20
	20			±25	±20
	25			±25	±20
	30			±25	±20
	35			±20	±12
	40			±20	±12
	45			±12	
	48			±12	
	75				
	80				
	85				
	90				
	95				
	100				



HF (13.56 MHz)

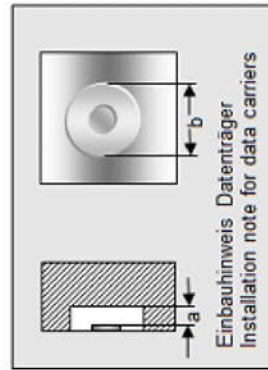
BIS M-410-067-001-04-S92

Order Code: BIS00W1

BALLUFF

BIS M-410-__

	BIS M-132-10/L	BIS M-132-10/L- HT	BIS M-133-02/A	BIS M-134-10/L	BIS M-134-10/L- HT
passende Datenträger Appropriate data carriers					
Abstand Datenträger zu Metall in mm (a) Data carrier distance to metal in mm	>25	>25	>25	>50	>50
Freizone Datenträger in mm (b) Data carrier clear zone in mm	>100	>100	>100	>150	>150
Schreibabstand in mm Write distance in mm	0-15	0-15	0-32	0-32	0-36
Leseabstand in mm Read distance in mm	0-15	0-15	0-32	0-32	0-36
Versatz in mm bei Abstand von	±15	±15	±20	±22	±25
	5	±15	±20	±22	±25
	10	±12	±20	±22	±25
	15	±8	±16	±20	±25
	20		±16	±20	±25
	25		±10	±12	±20
	30		±10	±12	±20
	32		±8	±8	±12
	36				±12
	40				
	45				
	50				
	55				
	60				
	65				
	68				
	75				
	80				
	85				
	90				
	95				



HF (13.56 MHz)

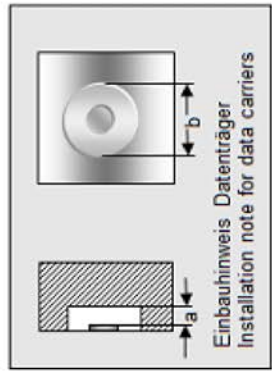
BIS M-410-067-001-04-S92

Order Code: BIS00W1

BALLUFF

BIS M-410-__

	BIS M-135-02/L	BIS M-135-03/L	BIS M-135-03/L- HT	BIS M-135-07/L	BIS M-135-07/L- HT
passende Datenträger Appropriate data carriers					
Abstand Datenträger zu Metall in mm (a) Data carrier distance to metal in mm	>50	>50	>50	>50	>50
Freizone Datenträger in mm (b) Data carrier clear zone in mm	>150	>150	>150	>150	>150
Schreibabstand in mm Write distance in mm	0-60	0-68	0-70	23-46	23-46
Lesabstand in mm Read distance in mm	0-60	0-68	0-70	23-46	23-46
Versatz in mm bei Abstand von	0 5 10 15 20 23 30 32 35 40 46 50 55 60 65 68 70 80 85 90 95	±35 ±40 ±40 ±40 ±40 ±40 ±32 ±32 ±32 ±32 ±32 ±24 ±24 ±24 ±15 ±15 ±15	±44 ±44 ±44 ±44 ±44 ±32 ±32 ±32 ±32 ±32 ±32 ±25 ±25 ±15 ±15 ±15	±24 ±24 ±18 ±18 ±18 ±10	±24 ±24 ±18 ±18 ±18 ±10
Offset in mm at distance					



HF (13.56 MHz)

BIS M-410-067-001-04-S92

Order Code: BIS00W1

BALLUFF

BIS M-410-__

	BIS M-108-02/L					
passende Datenträger						
Appropriate data carriers						
Abstand Datenträger zu Metall in mm (a)	>25					
Data carrier distance to metal in mm						
Freizone Datenträger in mm (b)	>120					
Data carrier clear zone in mm						
Schreibabstand in mm	0-40					
Write distance in mm						
Leseabstand in mm	0-40					
Read distance in mm						
Versatz in mm	0	±22				
bei Abstand von	5	±22				
	10	±22				
	15	±22				
	20	±22				
	25	±20				
	30	±20				
	35	±20				
	40	±10				
	45					
	50					
	55					
	60					
	65					
	70					
	75					
	80					
	85					
	90					
	95					
	100					

