



DIGI XBEE INDUSTRIAL GATEWAY

Programmable gateway connects Digi XBee enabled devices to remote applications over cellular or Ethernet

Digi XBee® Industrial Gateway is a rugged Digi XBee to IP solution. Ideal for any environment, the gateway has an extended temperature range and rugged enclosure.

Digi XBee Industrial Gateway features scalable remote configuration and management of Digi XBee networks. By default, all **Digi XBee** data sent to the gateway is automatically available to online applications via **Digi Remote Manager®** (Digi RM). With a simple, open-source Python development environment, this gateway also enables custom applications to run locally while interfacing across existing Ethernet or

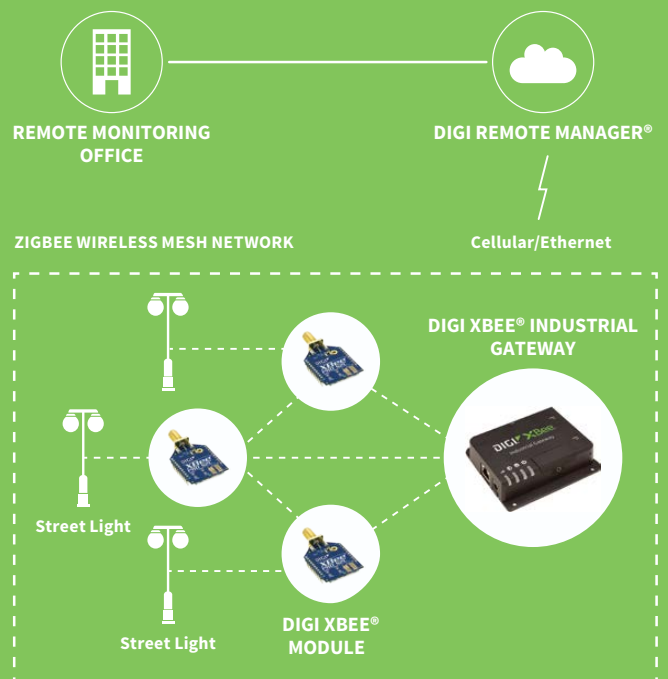
cellular networks for WAN connectivity to cloud-based applications.

Gain critical insights into your deployed devices and manage your network with Digi RM — the command center for your deployment. Digi RM is a cloud-based solution that facilitates easy setup, mass configuration, maintenance and support for hundreds or even thousands of remote Digi devices. Digi RM lets you evaluate, update and configure your Digi enterprise products — and the health of your network — at scale after deployment.

BENEFITS

- Open-source Python environment for custom application development on the gateway
- Out-of-box integration with **Digi Remote Manager** enables remote connectivity, configuration and management of **Digi XBee** networks
- ZigBee enabled for connection to local wireless devices
- Cellular and Ethernet WAN options for flexible broadband connectivity
- Can be deployed in any environment due to industrial temp range and rugged enclosure

APPLICATION EXAMPLE



RELATED PRODUCTS



SPECIFICATIONS

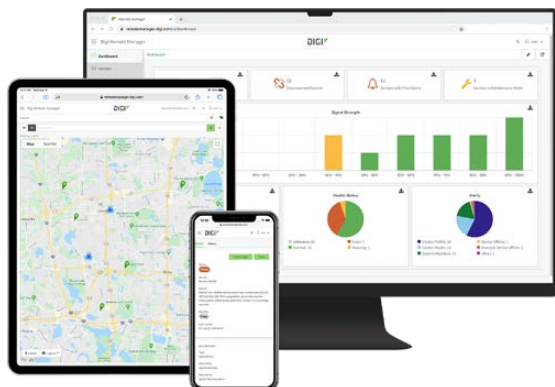
Digi XBee® Industrial Gateway

Digi XBee® Industrial Cellular Gateway

GENERAL		
MANAGEMENT	Secure enterprise management via Digi Remote Manager®	
PROTOCOLS	UDP/TCP, DHCP	
LEDS	Cellular signal strength, network (LAN/WAN), Zigbee (wireless LAN), power	
SECURITY	TLS 1.2, cellular network security	
WWAN		
3G HSPA+, BANDS	N/A	B5(850), B8(900), B2(1900), B1(2100), B4(AWS)
LTE CATEGORY 1	N/A	Verizon: bands 2, 4, 13 AT&T, T-Mobile: B2(1900), B4(AWS1700), B5(850), B12/B12(700)
ANTENNA CONNECTORS	N/A	HSPA+ version: 1 x 50 Ω SMA (center pin: female); LTE version: 2 x 50 Ω SMA (center pin: female)
SIM SLOTS	N/A	2 x 2FF SIM slots; second SIM slot reserved for future use
SIM SECURITY	N/A	Screw-down SIM cover
SOFTWARE & MANAGEMENT		
PYTHON	2.7.1	
MEMORY FREE SPACE	20 MB RAM and 20MB Flash for Python applications	
XBEE GATEWAY APPLICATION	Wireless LAN data sent to the gateway is automatically available to online applications via Digi Remote Manager	
ZIGBEE		
ZIGBEE STACK	ZigBee Standard and ZigBee PRO versions available	
ZIGBEE MODULES SUPPORTED	XBee S1, XBee S2, XBee 3	
ZIGBEE	Standard: transmit power 6.3 mW (+8 dBm); receiver sensitivity: -102 dBm PRO: transmit power 63 mW (18dBm); receiver sensitivity: -102 dBm	
ZIGBEE ANTENNA	1 x 50 Ω SMA (center pin: female)	
ETHERNET		
PORTS	(1) RJ-45 port	
PHYSICAL LAYER	10/100 Base-T	
DATA RATE	10/100 Mbps (auto-sensing)	
MODE	Full or half duplex (auto-sensing)	
INTERFACE	Auto MDI/MDIX	
ROUTING	Ethernet port designed for configuration and WAN backhaul	
PHYSICAL		
DIMENSIONS (L X W X H)	7.62 cm x 10.16 cm x 2.54 cm (3 in x 4 in x 1 in)	
WEIGHT	.22 kg (0.5 lb)	
ENCLOSURE MATERIAL/RATING	Industrial (metal)/IP30	
POWER REQUIREMENTS		
POWER INPUT	5 VDC +/- 5%; Digi approved power supply must be used	
POWER SUPPLY	See accessory options	
POWER CONSUMPTION	Typical 1.2 W, Max 2.5 W	Typical 3.5 W; Max 11 W
ENVIRONMENTAL		
OPERATING TEMPERATURE	-30° C to 70° C (-22° F to 158° F)	-30° C to 70° C (-22° F to 158° F) Reduced performance above 60° C (140° F)
RELATIVE HUMIDITY	5% to 95% (non-condensing)	
APPROVALS		
GSM/UMTS	PTCRB	
CELLULAR CARRIERS	Verizon, AT&T, certified by most major international carriers	
SAFETY	IEC 60950-1:2005; EN 60950-1:2006; CSA C22.22 No. 60950-1	
EMISSIONS/IMMUNITY	FCC Part 15b, Industry Canada (IC), CE Mark	
WARRANTY		
PRODUCT WARRANTY	3-year*	

*Standard 3-year warranty upgradeable to 5 years with purchase of a Digi Remote Manager Premier 5-year subscription applicable to the product purchased only at the time of product purchase and with product registration at that time in Digi Remote Manager.

DIGI REMOTE MANAGER®



Digi Remote Manager is the technology platform that brings networks to the next level, allowing networks — and the people who manage them — to work smarter. With Digi Remote Manager you can transform a multitude of dispersed IoT devices into a dynamic, intelligent network. Now you can easily deploy, monitor and diagnose thousands of mission-critical devices from a single point of command — on your desktop, tablet or phone. All the while, its software-defined security diligently safeguards your entire Digi ecosystem.

Learn more at www.digi.com/digi-remote-manager

CAPABILITIES

- Activate, monitor and diagnose your mission-critical devices from a single point of command and control — on your desktop or mobile app
- Schedule key operations — including firmware updates and file management — on a single device or on a group of devices, keeping your network functionality up-to-date and maintaining compliance standards
- Manage edge devices out-of-band via console terminal access
- Keep tabs on device health and connectivity across device deployments of any size
- Create detailed reports and enable real-time alerts for specified conditions
- Integrate device data through open APIs to gain deeper insights and control with third-party applications
- Report and alert on performance statistics, including connection history, signal quality, latency, data usage and packet loss

INFRASTRUCTURE

- Hosted in a commercial-grade cloud server environment that meets SOC 1®, SOC 2® and SOC 3® standards
- Superior availability, operating to 99.9% or greater
- Open APIs available to support application development

SECURITY

- More than 175 security controls in place to protect your data
- Member of the Center for Internet Security® (CIS®)
- Enables compliance with security frameworks like ISO27002, HIPAA, NIST and more
- Earned Skyhigh's CloudTrust™ Program highest rating of Enterprise-Ready

PART NUMBERS**DIGI XBEE® INDUSTRIAL GATEWAY**

XGI-20CZ7-E00-W0

Digi XBee Industrial Gateway - ZigBee to Ethernet, power supply and antenna not included

XGI-2PCZ7-E00-W0

Digi XBee Industrial Gateway - ZigBee Pro to Ethernet, power supply and antenna not included

XGI-2PCZ7-EL1-W0

Digi XBee Industrial Gateway - ZigBee Pro to Cat 1, power supply and antenna not included

PART NUMBERS**ACCESSORIES**

76000976

Kit, Digi TransPort 9-30 V DC/DC adapter

76002021

Power supply, 5 V barrel plug, wall plug in, commercial range

76000965

Kit, Digi TransPort WR11 XT power supply Int, industrial temperature range

PART NUMBERS**DIGI REMOTE MANAGER®**

DIGI-RM-STD-1YR

Digi Remote Manager Standard - 1-year subscription

DIGI-RM-PRM-1YR

Digi Remote Manager Premier - 1-year subscription

DIGI-RM-PRM-3YR

Digi Remote Manager Premier - 3-year subscription

DIGI-RM-PRM-5YR

Digi Remote Manager Premier - 5-year subscription