

Powerful Compact Enterprise Server for Edge AI and Compute



Supermicro SYS-E403-13E-FRN2T



Enterprise Edge Server with Multiple GPUs for AI Inferencing

Supermicro's E403-13E-FRN2T is a high-performance powerhouse system engineered to deliver powerful computing capabilities in a compact form factor. Designed as a short-depth system, it expands the possibilities of what types of applications can be deployed at the enterprise edge, such as edge AI inferencing, real-time video analytics, and multi-access edge computing, helping bring data center-level performance closer to where the data is generated. It has been specifically designed for deployment flexibility to easily fit in an IT closet or placed in a wall-mount configuration for space limited locations.

The system uses 4th and 5th Gen Intel® Xeon® Scalable processors with up to 300W TDP with air-cooling. This makes it possible to have access to processing power that would typically be found in data center rack mount locations. Additionally, the E403-13E-FRN2T features three PCIe full-height/full-length slots enabling the deployment of one double-width GPU or two single-width GPUs for Edge AI inferencing. This flexibility makes it an excellent choice for demanding edge AI workloads and other compute-intensive tasks in constrained environments.

Supermicro has a solution to deploy this system in an outdoor enclosure for harsh environments

Intel Products and Technologies

Accelerating AI and Analytics at the Edge



[Intel® Xeon® Processors](#)



[Intel® Arc™ GPU](#)



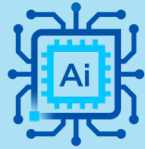
[OpenVINO™ Toolkit](#)



[Intel® oneAPI Toolkit](#)

Key Features

Empowered by Intel.



Edge AI Ready



Three PCIe
5.0x16 Slots



Flexible
Deployment



Remote
Management

Supermicro SYS-E3403-13E-FRN2T



Product Specifications

CPU	Single Socket E (LGA-4677), 5th Gen Intel® Xeon® / 4th Gen Intel® Xeon® Scalable processors
Graphics	Up to (1) double-width or (2) single-width GPUs
Memory	(8) DIMM slots, max memory (1DPC): Up to 2TB 5600MT/s ECC DDR5 RDIMM
Storage	Total (4) bays. (2) front hot-swap 2.5" NVMe drive bays and (2) internal fixed 2.5" SATA* drive bays
Wireless Network	Available through an add-on module
LAN	(1) RJ45 1 GbE Dedicated BMC LAN port and (2) RJ45 10 GbE LAN ports (Intel® Ethernet Controller X550-AT2)
Operating / Non-Operating Temp.	32°F to 113°F/ -40°F to 158°F
Dimension (W x D x H)	10.5" x 16" x 4.62"
Weight	18.5 lbs (8.16 kg)
OS	Windows Server 2022, RHEL 9.2, Oracle Linux 9.2, Ubuntu 22.04

Learn More

[Supermicro SYS-E3403-13E-FRN2T](#)

Intel technologies may require enabled hardware, software or service activation. // No product or component can be absolutely secure. // Your costs and results may vary. // Performance varies by use, configuration and other factors. // See our complete legal [Notices and Disclaimers](#). // Intel is committed to respecting human rights and avoiding causing or contributing to adverse impacts on human rights. See Intel's [Global Human Rights Principles](#). Intel's products and software are intended only to be used in applications that do not cause or contribute to adverse impacts on human rights.

© Intel Corporation. Intel, the Intel logo and other Intel marks are trademarks of Intel Corporation or its subsidiaries. Other names and brands may be claimed as the property of others.